



Print Production Manager

Job and Job Queue Management Simplified

Print Production Manager allows users to control and monitor job progress through each step of the production environment. Up to five clients can access control over Fusion RIP channel data and exercise complete control over the production workflow. All from their workstations using standard browser applications.

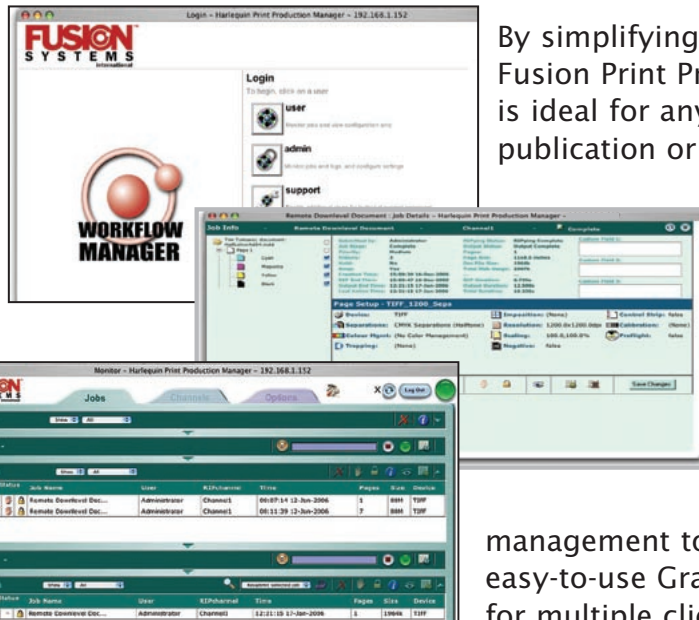
Accessing up to the minute information on page processing, plate output, queue loads, and other processes is easily accomplished from any location using Print Production Manager.

Jobs can be soft-proofing, approved or held,

re-prioritized, resubmitted or removed. With Print Manager you are in control, while new files continue to be processed.

By simplifying these processes, the Fusion Print Production Manager is ideal for any busy newspaper, publication or commercial production environment. It can manage CtP and CtF plate production, or a combination of devices.

It is a true, everyday job management tool that employs an easy-to-use Graphical User Interface for multiple clients. Simply put, Print Production Manager keeps you informed, allowing you to make decisions that keeps work moving.



Makes Job and Job Queue Management simple

- Easy to operate, it's so simple that it can be used with very little training.
- Lower cost of entry compared to higher end workflow solutions.
- Saves time and money because process control is visual and simple.
- Accommodates up to five concurrent remote clients across the LAN.
- Extended ROAM functionality allows you to zoom, flip, scroll and rotate the image within individual channels.
- Contains a powerful file / job search capability.
- Places you in control of job processing and output.



Print Production Manager

SPECIFICATIONS

Supported Platforms:

Administrators can install the Print Production Manager web server on the following platforms:

- Windows XP
- Windows 2000
- Windows 2003
- Mac OS X (10.3.x)
- Mac OS X (10.4.2) Client only

NOTE: System will support up to five concurrent local and/or remote web-based clients..

Recommended Machine Specification:

The recommended specification for the Print Production Manager web server machine is:

- Mac G5 Dual PPC 1.5GHz or higher, 2GB RAM, 40GB HD, Color Display (minimum 1024 x 768 pixels per inch)

Browser requirements:

Users can access the Print Production Manager using one of the following standard web browsers:

- Windows Internet Explorer 5.5/6.0 (preferred)
- Netscape Navigator 7.1
- Mozilla Firefox 1.0.2
- Macintosh Safari 1.2/1.3/2.0

Harlequin RIP Compatibility:

Print Production Manager requires Harlequin Genesis RIP Version 7.0r3 or higher.

Security:

Before you can run the Print Production Manager, you must obtain a permit file and add it using the Harlequin License Manager, which is automatically installed as part of the Harlequin RIP installation.



For more information, please contact us
at: info@fusionsystems.com

FUSIONTM
S Y S T E M S
international

© 2006 LDR International, Inc. The Fusion Systems International product and service names are pending trademarks or service marks of LDR International, Inc. and may be registered in certain jurisdictions. Other company brand, product and service names are for identification purposes only and may be trademarks or registered trademarks of their respective holders. This information is subject to change without notice.

12021 NE Airport Way Portland, OR 97220
(503) 261-7395 (503) 261-7383

Visit Us: <http://www.fusionsystems.com>