



The perfect solution for graphic design production

- ✦ You probably own many digital devices including a scanner, camera, printer and video camera;
- ✦ You work with software from all the leading Vendors including Adobe, Xpress, Corel and Microsoft.
- ✦ You need cross-platform compatibility in mixed OS X and Windows environments

YOU NEED TO GET THEM ALL SEEING THE SAME THING

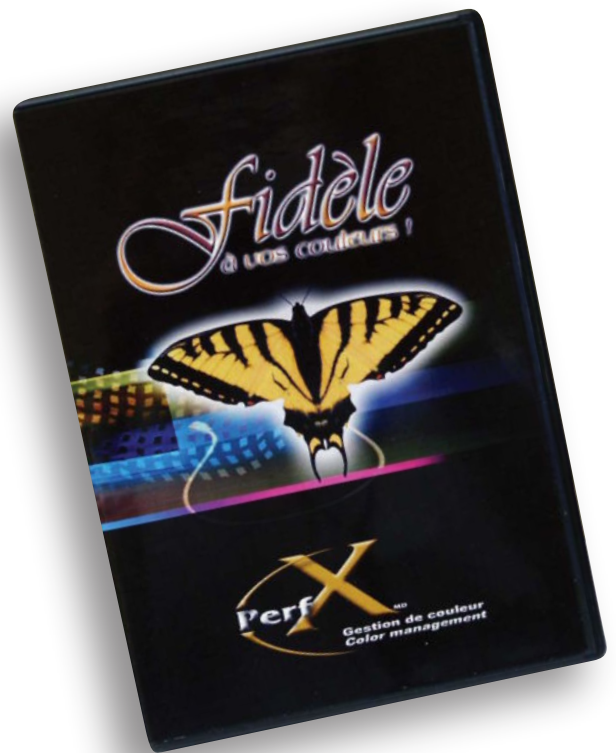
PerfX Color management Input™ makes it possible to achieve PerfXion!

PerfX Colour Management Input will create beautiful ICC profiles you can use to exchange accurate colour data between all your digital tools, software and devices.

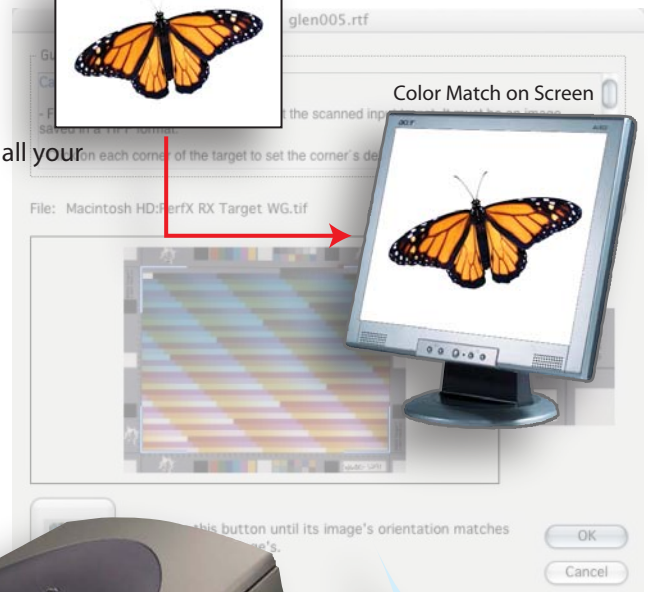
This "Input" version allows to make ICC profiles for scanners and digital cameras.

Key features:

- Supports all input profiling targets
- Creates ICC profiles in reflective and transparency mode for scanner
- Specially designed for the digital photography and color scanning industry



Original Document



WWW.TGLC.COM

PerfX Color Management Input™

Feature List



Achieve scan and photo production PerfXion



General

- Available for Mac OS X™ or Windows™.
- Use proprietary artificial Intelligence module for color calculation and interpolation
- Save the complete profiling session for further reference, remote support and backup.
- Customizable guidelines helping you during the entire profiling process
- Option to create 8 or 16 bit ICC profiles.
- Option to set the default Rendering Intent in the ICC profile

Input Profiling

- Creates scanner and digital camera ICC profiles.
- Supports all available input targets*
 - IT8 and custom Reflective and Transparency targets
 - TGLC PerfX RX Target Wide Gamut™
- Statistical Data Report on screen and in special ICC profile Tag:
 - DeltaE accuracy under 2, 4 and 6 deltaE

Accurate
Input
Profiling

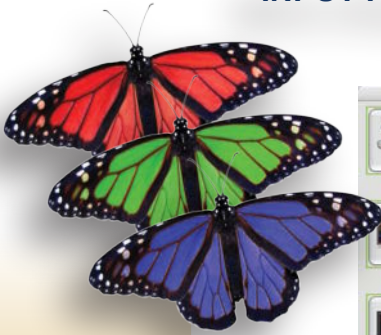


WWW.TGLC.COM

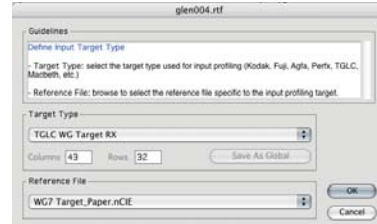
Screen captures



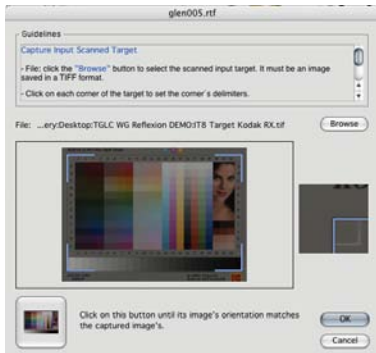
INPUT PROFILING



Main interface for Input profiling



Choosing the Input target type



Capturing the input target (scanner)



Capturing the input target (camera)



Saving the Input profile



Input profile Statistics



PerfX Color Management Input™

Compatibility



Operating systems

- Apple Macintosh OS X
 - System 10.2 or higher
 - 256 MB of available RAM
 - 24-bit display
 - 100 MB of available hard-disk space
 - USB 2.0 port
- or
- Microsoft Windows
 - Windows 2000 or XP
 - 256 MB of available RAM
 - 24-bit display
 - 100 MB of available hard-disk space
 - USB 2.0 port

Input (scanner and digital camera) Profiling

- Supports all available input targets*
 - IT8 and custom Reflective and Transparency targets
 - Gretag Macbeth Color Checker™
 - TGLC PerfX RX Target Wide Gamut™
 - Custom Input Targets



WWW.TGLC.COM